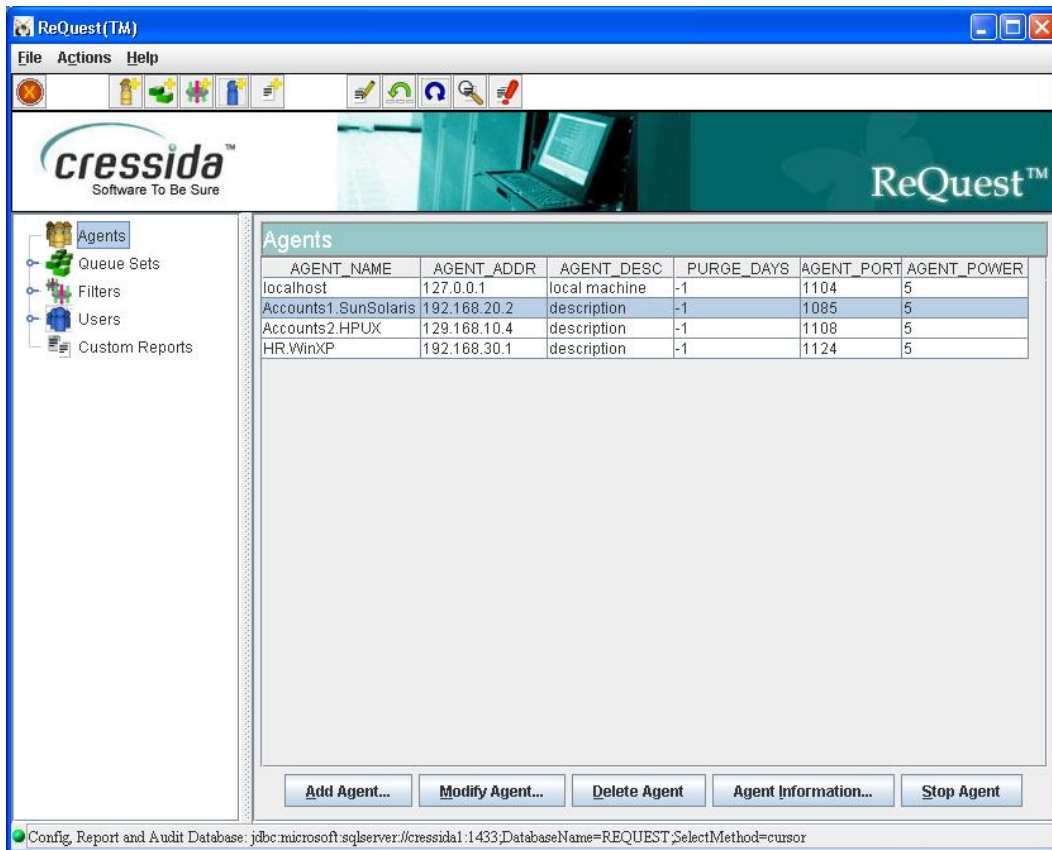
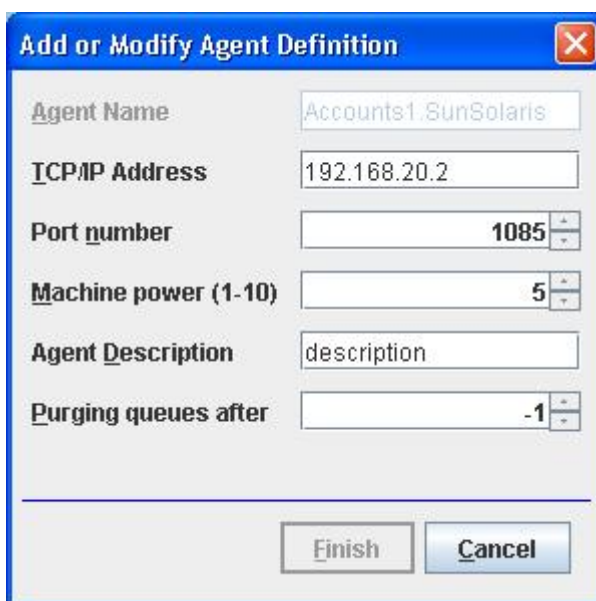


Cressida ReQuest Product Screenshots

ReQuest Agents:

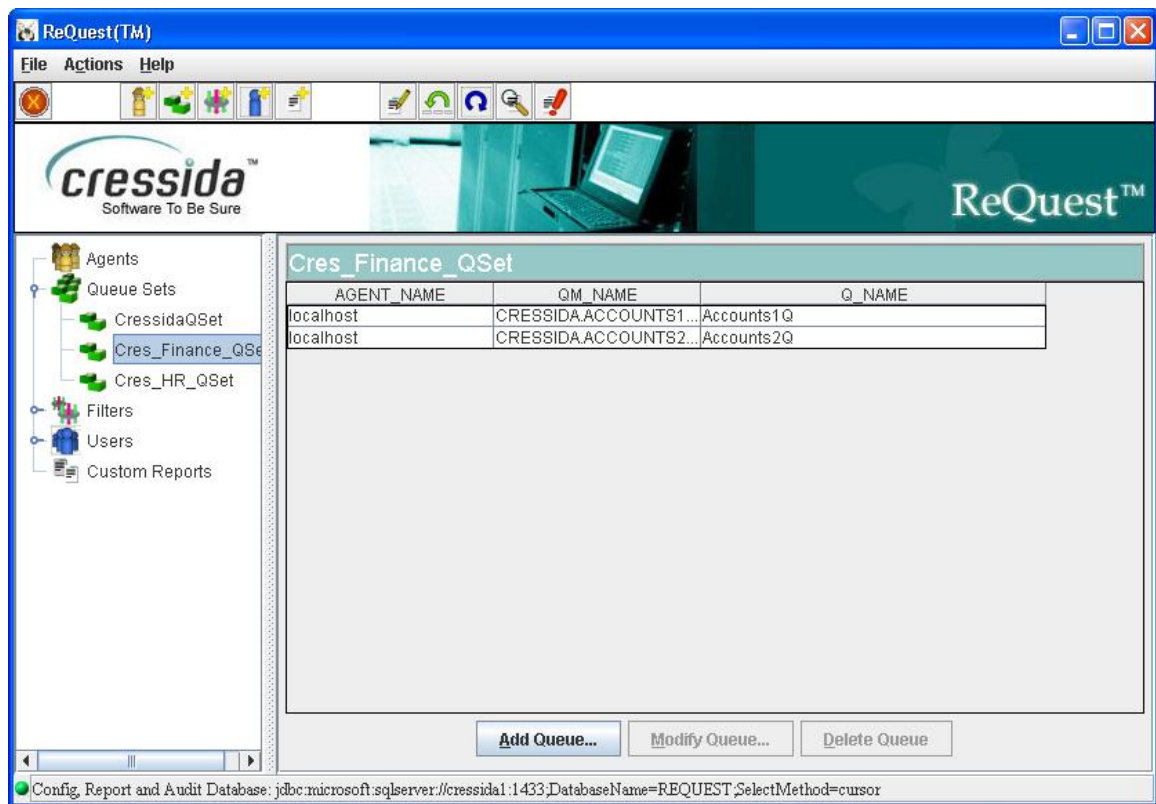


Screenshot 1.0: Displaying all deployed Agents and their configurations.

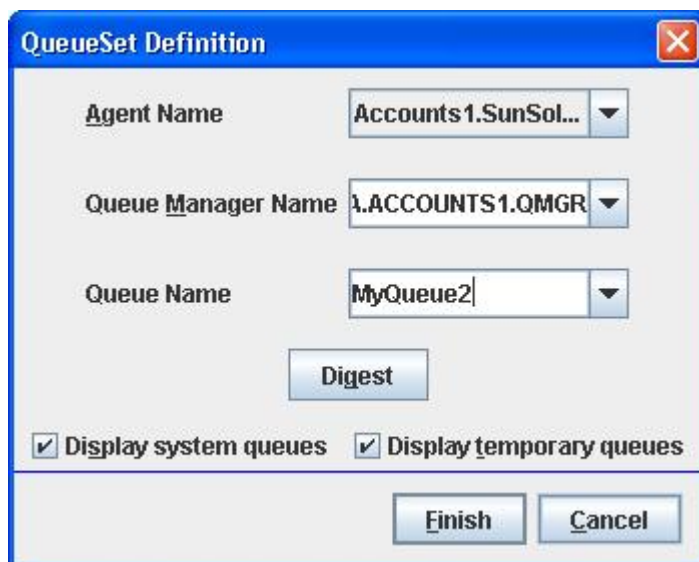


Screenshot 1.1: Adding and configuring Agents.

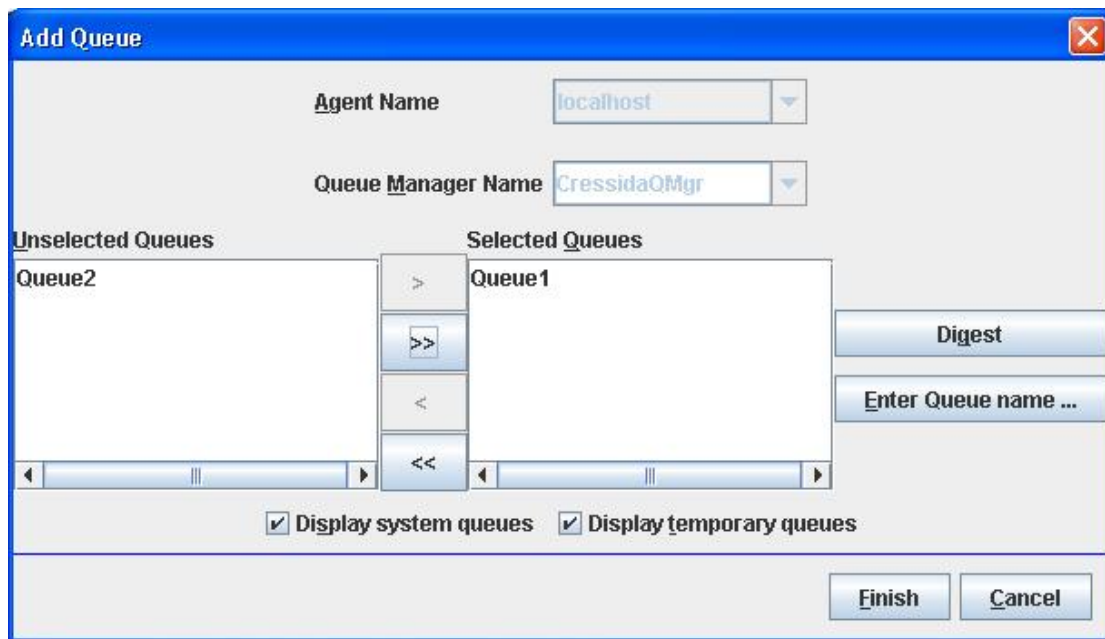
ReQuest Queue Sets:



Screenshot 2.0: Displaying all created Queue Sets and their content.

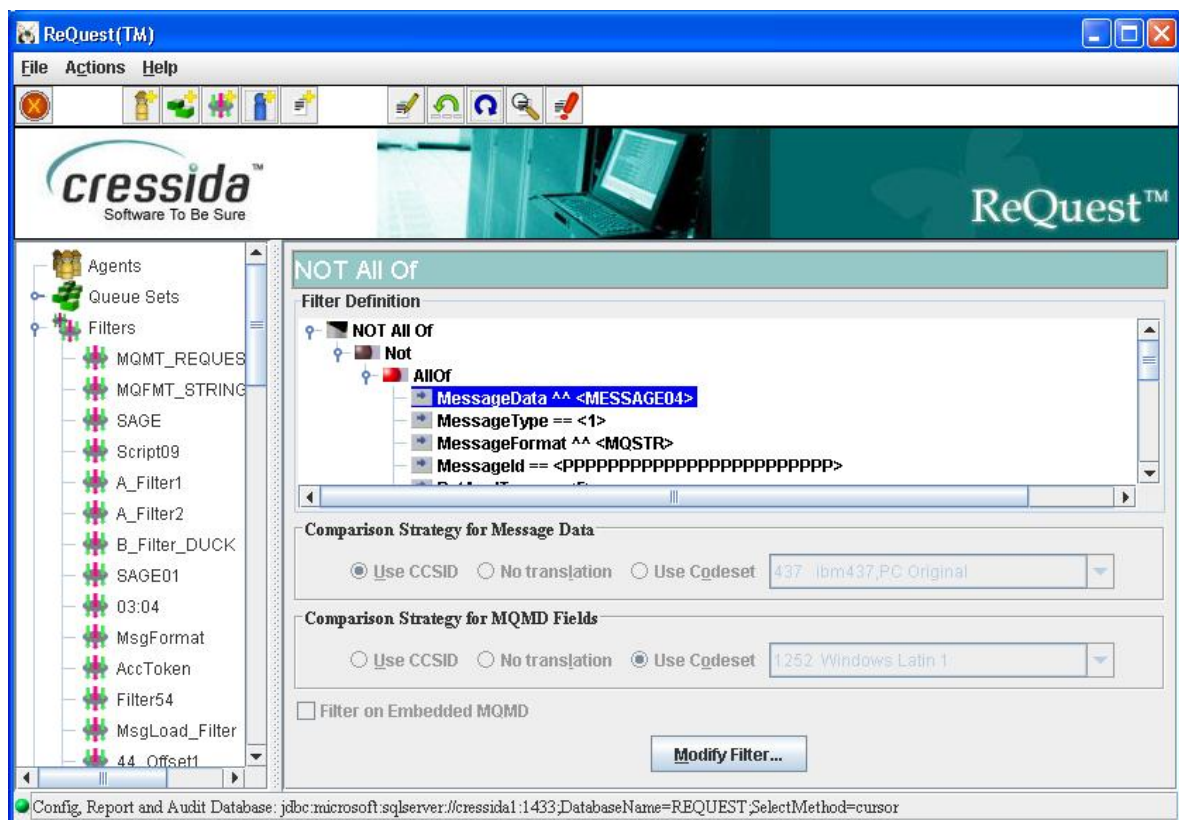


Screenshot 2.1: Assigning Queue Manager, Queues and Agent to a Queue Set.

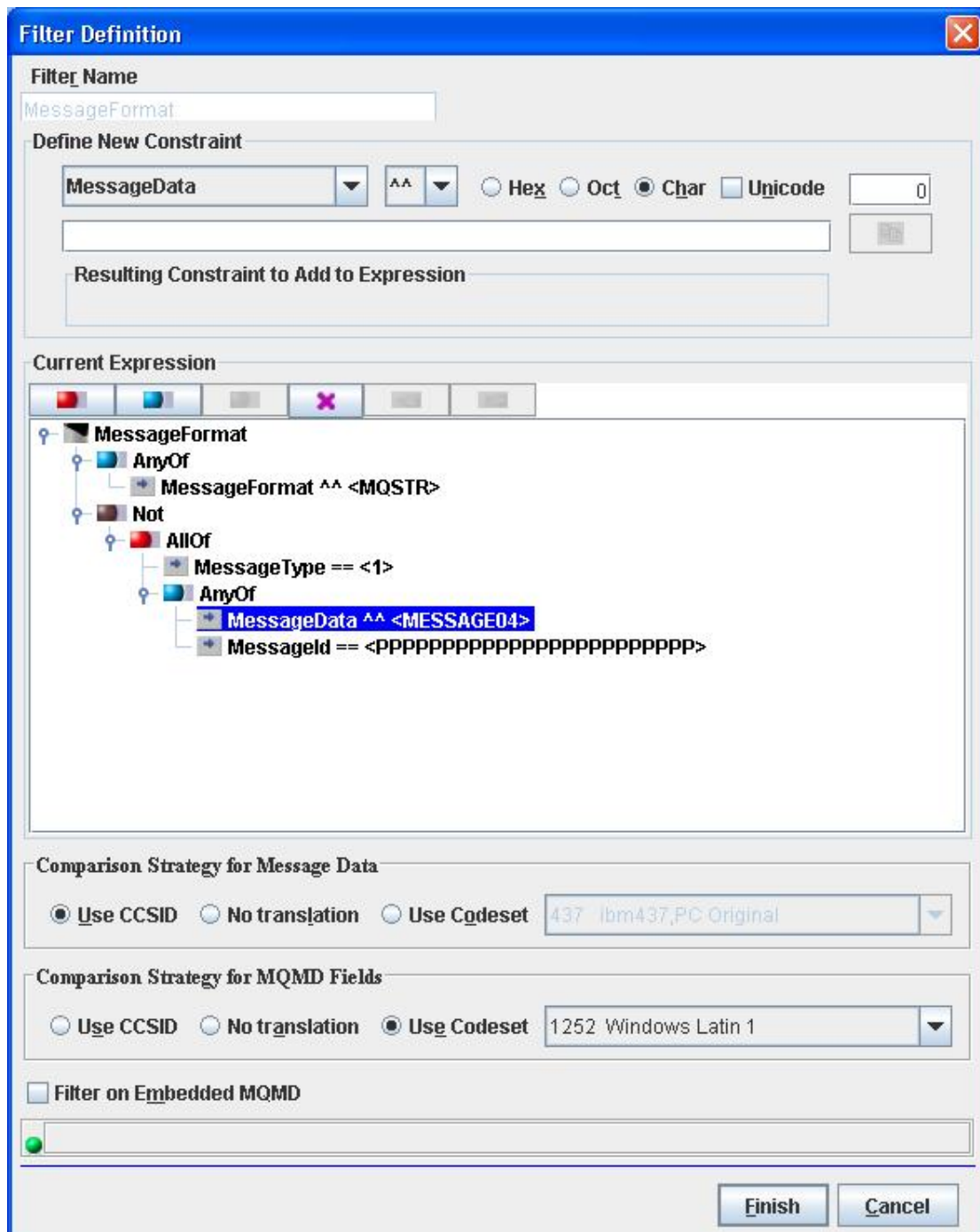


Screenshot 2.2: Selecting Queues to be added to the Queue Set.

ReQuest Filtering:

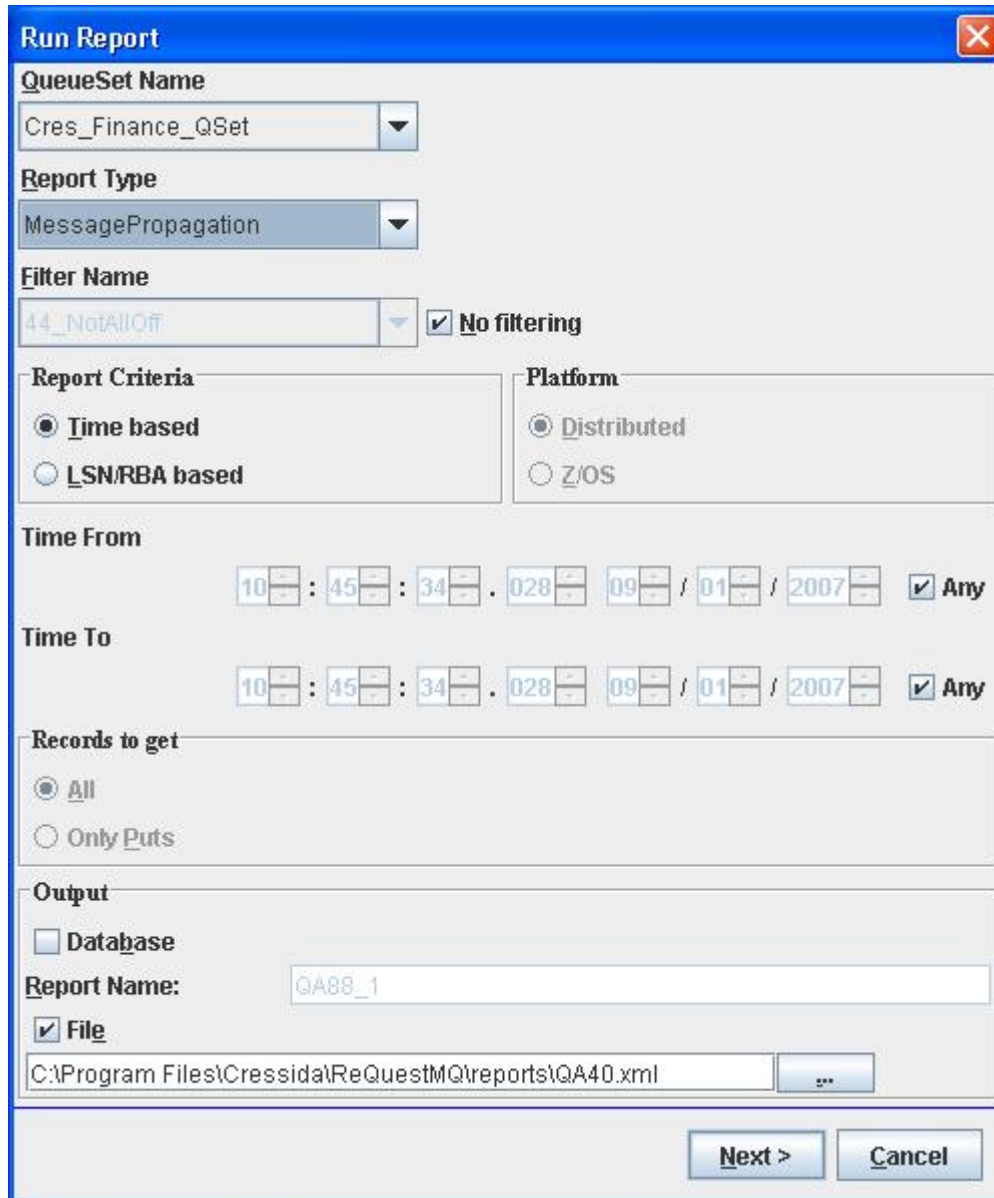


Screenshot 3.0: Displaying all created Filters and their logic.



Screenshot 3.1: Adding a Filter in ReQuest.

ReQuest Report Generation:



Run Report

QueueSet Name
Cres_Finance_QSet

Report Type
MessagePropagation

Filter Name
44_NotAllOff No filtering

Report Criteria
 Time based
 LSN/RBA based

Platform
 Distributed
 Z/OS

Time From
10 : 45 : 34 . 028 09 / 01 / 2007 Any

Time To
10 : 45 : 34 . 028 09 / 01 / 2007 Any

Records to get
 All
 Only Puts

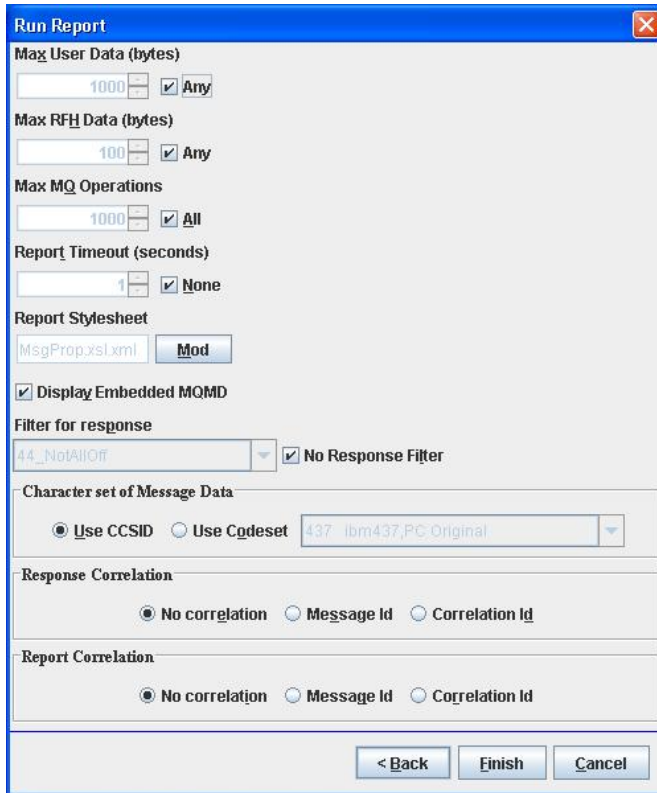
Output
 Database
 File

Report Name: QA88_1

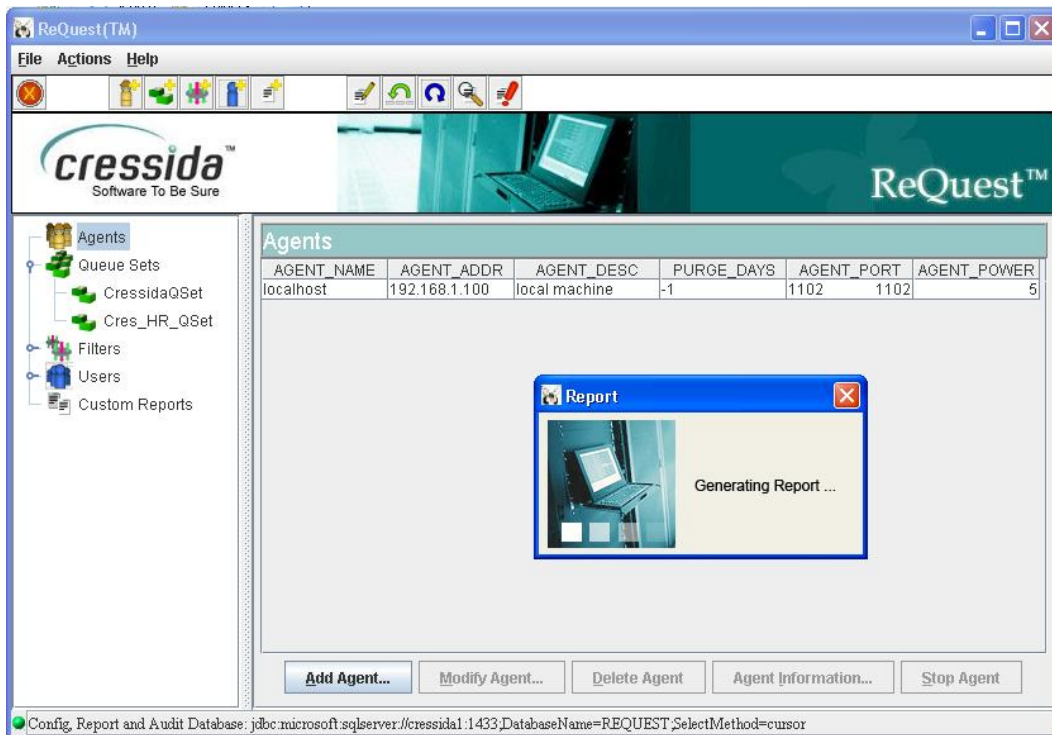
C:\Program Files\Cressida\ReQuest\MQ\reports\QA40.xml

Next > **Cancel**

Screenshot 4.0: Creating a Message Propagation Report using ReQuest.



Screenshot 4.1: Creating a Message Propagation Report using ReQuest.



Screenshot 4.2: Report Generation screen.

Run Recovery

QueueSet Name: Cres_Finance_QSet

Filter Name: 44_NotAllOff No filtering

Recovery Criteria: Time based LSN/RBA based

Platform: Distributed Z/OS

Ignore Before Time: 10 : 45 : 32 . 716 09 / 01 / 2007 Any

Recover To Time: 10 : 45 : 32 . 716 09 / 01 / 2007 Any

Map Queues to ...

Own Queue Manager

Single specified Queue Manager

Multiple specified Queue Managers Define / View

Queue Prefix: P Queue Suffix: X

Options:

Purge target queue before starting recovery

Assume source queue empty if necessary

Automatically create queues

Recover user message

Transaction Handling:

Commit Rollback Fail

Finish Cancel

Screenshot 5.0: Executing Message ReCoverly using ReQuest.

Run Replay [X]

Replay Type

Immediate To File From File

QueueSet Name

Cres_Finance_QSet

Filter Name

44_NotAllOff No filtering

Replay Criteria

Time based LSN/RBA based

Platform

Distributed Z/OS

Ignore Before Time

10 : 45 : 35 . 294 09 / 01 / 2007 Any

Replay To Time

10 : 45 : 35 . 294 09 / 01 / 2007 Any

Map Queues to ...

Own Queue Manager

Single specified Queue Manager

Multiple specified Queue Managers [Define / View](#)

Queue Prefix **Queue Suffix**

P X

Pacing

None Fixed Speed Up Slow Down 5

Options

Automatically create queues

Recover user message

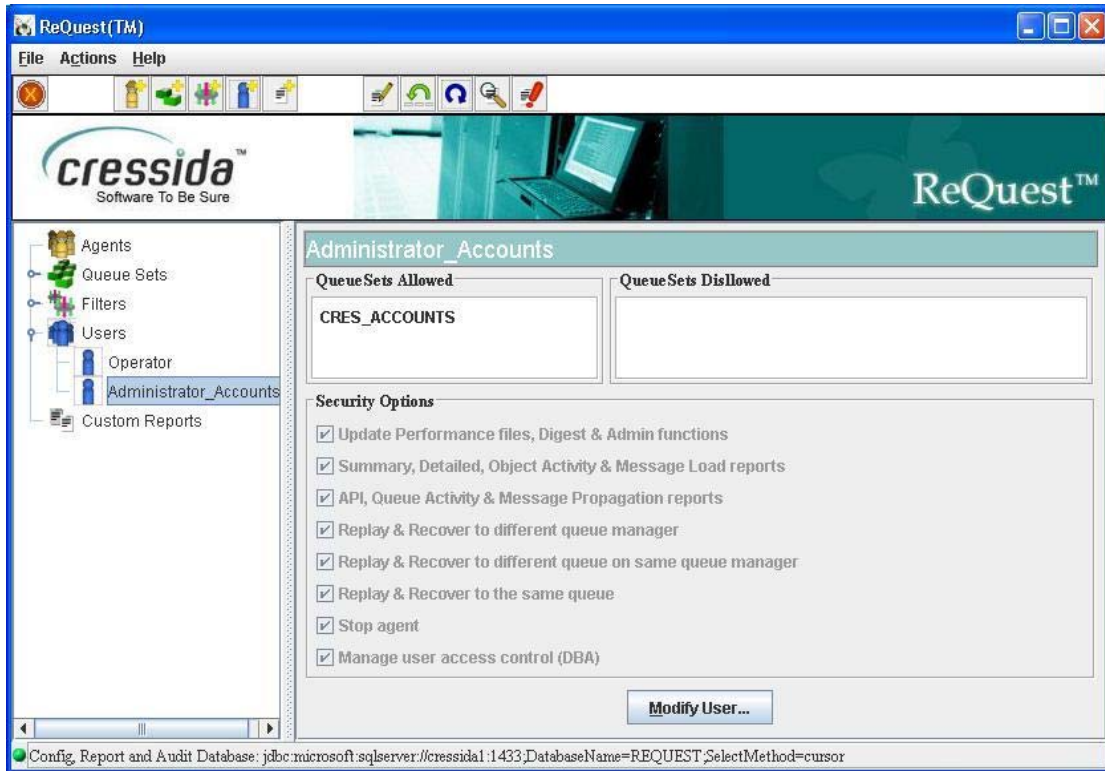
Finish **Cancel**

Screenshot 6.0: Executing Message RePlay using ReQuest.

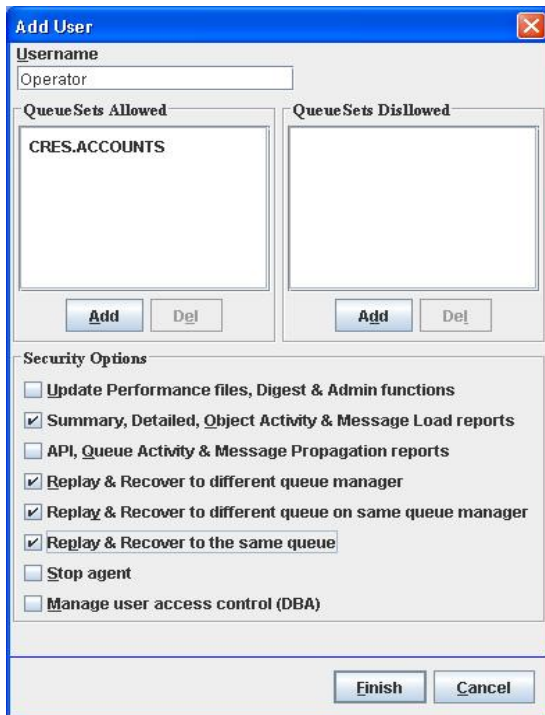
© Cressida Technology Ltd. All rights reserved.
 1 Lammas Gate, 84a Meadrow, Godalming, Surrey GU7 3HT UK
 UK : +44 14 83 23 93 00, USA : +1 914 238 7900 Email: info@cressida.info

ReQuest User Management:





Screenshot 7.0: Displaying ReQuest Users and their privileges.



Screenshot 7.1: Creating ReQuest Users and assigning privileges.